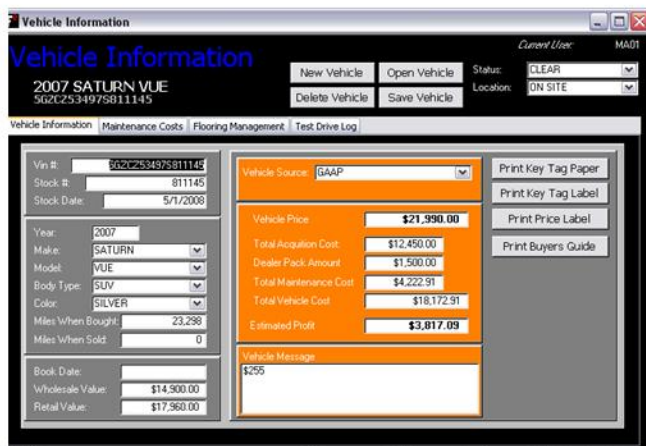


Inventory Management

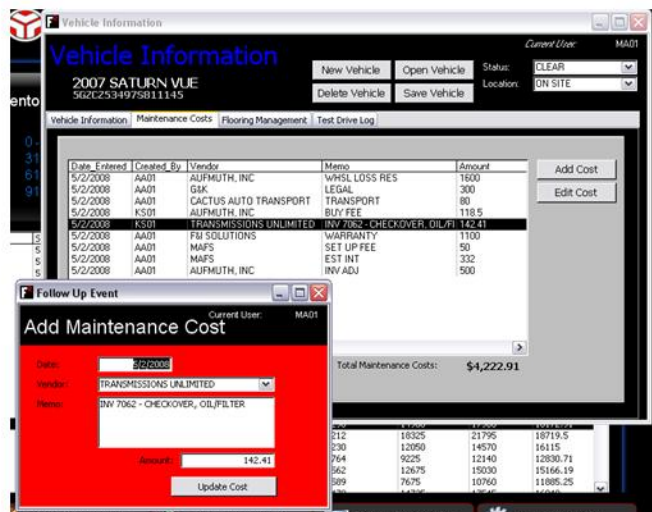
In Inventory Management the dashboard is used to manage the flow of both clear and pending inventory as vehicles age. A user can use many different options to refine



their search. From this screen a user can import Karpower Blue Book Values to the system. Vehicle Information tracks General Information, Maintenance Transactions, Flooring Transactions and Test Drives History.

Other Features:

- ◆ Bar Coded Process
- ◆ Quick Load
- ◆ Manage Inventory Age
- ◆ Track Maintenance Transactions
- ◆ Track Flooring Transactions
- ◆ Track Test Drive History



Inventory Management

BARCODED PROCESS

FAST has several different methods of using a barcode in Inventory Management. A barcode can be printed for the vehicle key tag. This barcode can be used in several areas of FAST including Deal Management, The Dealer Plate Log and from the Inventory Management page. When the barcode is scanned in Deal Management the system will load the vehicle on the deal worksheet with all of the cost information for that vehicle. When the vehicle is scanned on the Dealer Plate Log the system will fill in all the fields on the form pertaining to the vehicle. When the vehicle is scanned in Inventory Management the system will open the vehicle Information form for a user to have access to the vehicles information.

QUICK LOAD

Quick Load gives a user the ability to load the vehicle information form by simply entering the vehicle stock number on the Inventory Management form. This feature will also auto complete the stock number as a user starts to type it into the system.

MANAGE INVENTORY AGE

The Inventory Management page uses a unique method to manage a dealerships inventory. The dashboard displays the inventory based on the vehicles age allowing for a dealer to see a live snapshot of all inventory. The dashboard breaks inventory down into four different categories that show the age of a vehicle from 0 to 30 days, 31 to 60 days, 61 to 90 days and 91 days and older. This unique approach allows for the dealer to keep a close eye on inventory. All of the numbers on the dashboard are active links to the information behind them.

Inventory Management

TRACK MAINTENANCE TRANSACTIONS

FAST will give a dealer the ability to add unique cost information using the maintenance transactions. From here a user can select from a preloaded vender list or enter a vender manually. The user will then enter the cost and description associated with the vehicle. When a maintenance cost has been entered, the new total will be updated throughout the system.

TRACK FLOORING TRANSACTIONS

FAST allows a Dealer to enter flooring transactions so that amounts owed can be monitored. They will also have the ability to enter amount floored, curtailments, and vehicle payoffs. This allows a dealer to see what percentage of inventory is dealer owned versus inventory that is floored.

TRACK TEST DRIVE HISTORY

FAST allows users to keep track of all test drives for vehicles in inventory. This information is useful in determining if a vehicle is getting any activity from the public as it ages. This tool also helps find vehicles that should be considered for wholesale.